

Chapter 5:

Community Services, Facilities, and Transportation

5.1 Utilities Service

Electric service is provided to the Township by Consumers Energy and Cherryland Electric.

Propane gas service is commonly used and is provided by several private businesses. There is natural gas service in the Villages of Lake Leelanau and Leland, also South of 204.

A T & T provides communications service to Leland village and Lake Leelanau village. Century Telephone provides communications service to east Leland. Cell phone service is provided in portions of the township.

Cable, broadband and DSL services are provided in portions of the Township by a variety of companies.

5.2 Sanitary Sewer System

A public sanitary sewer system serves both villages. The sanitary sewer system was developed to protect the water quality of both groundwater and surface water in the area. This system collects effluent from septic tanks and pumps the effluent to a central effluent treatment facility. This facility is located in a portion of the Provemont Pond Natural Area between the villages. Individual septic tanks are pumped and maintained by the sewer system. The sewer facilities for the two villages are depicted in Figure 5-1 and 5-2.

The Leland Township sewer system currently serves over 500 users and was designed to serve existing buildings in the sewer district with only limited extra capacity for vacant lots or increased uses. The Sewer Commission has determined that there will not be enough capacity to serve all of the vacant lots within the sewer district and that the sewer system will be approaching capacity within a few years. The Sewer Commission has explored the possibility of expansion at the treatment plant, and preliminary approval from the Michigan Department of Environmental Quality has been received to increase the capacity of the system.

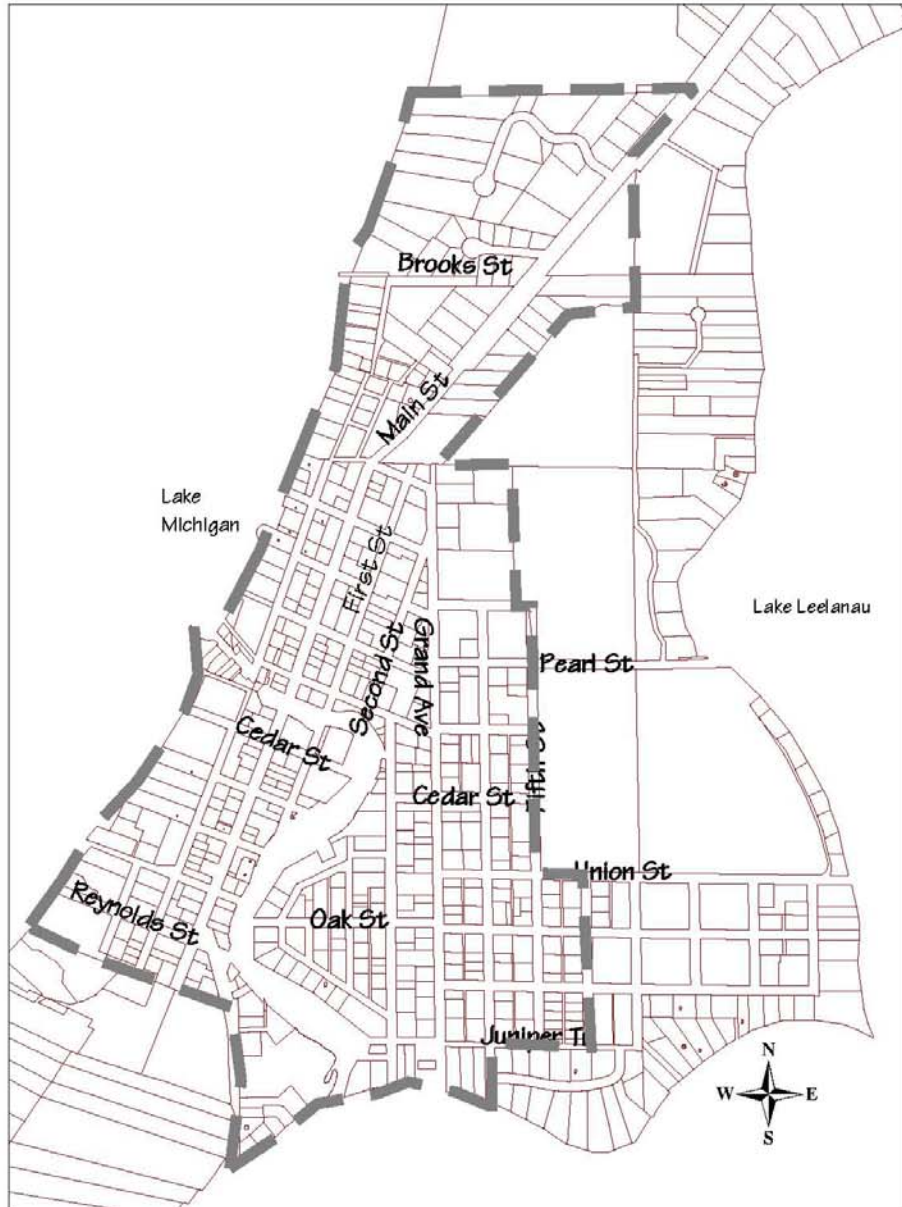
The sewer system was installed between 1991 and 1993 after years of planning and controversy. A major grant covering half the cost of the project was obtained from the Environmental Protection Agency to aid in financing this project. Bonds issued by the County Board of Public Works provided additional financing.

The Leland Township Board controls this system through the *Leland Township Sewer Use Ordinance* which established a Sewer District requiring mandatory use of public sewers. The Sewer Districts are shown in Figure 5-1 and Figure 5-2. Sewer district users pay operational and debt retirement fees in addition to installation fees. The Sewer Commission, appointed by the Township Board, serves in advisory capacity and makes recommendations to the Township Board.

Leland Township

Sewer District - Leland Village

Figure 5-1



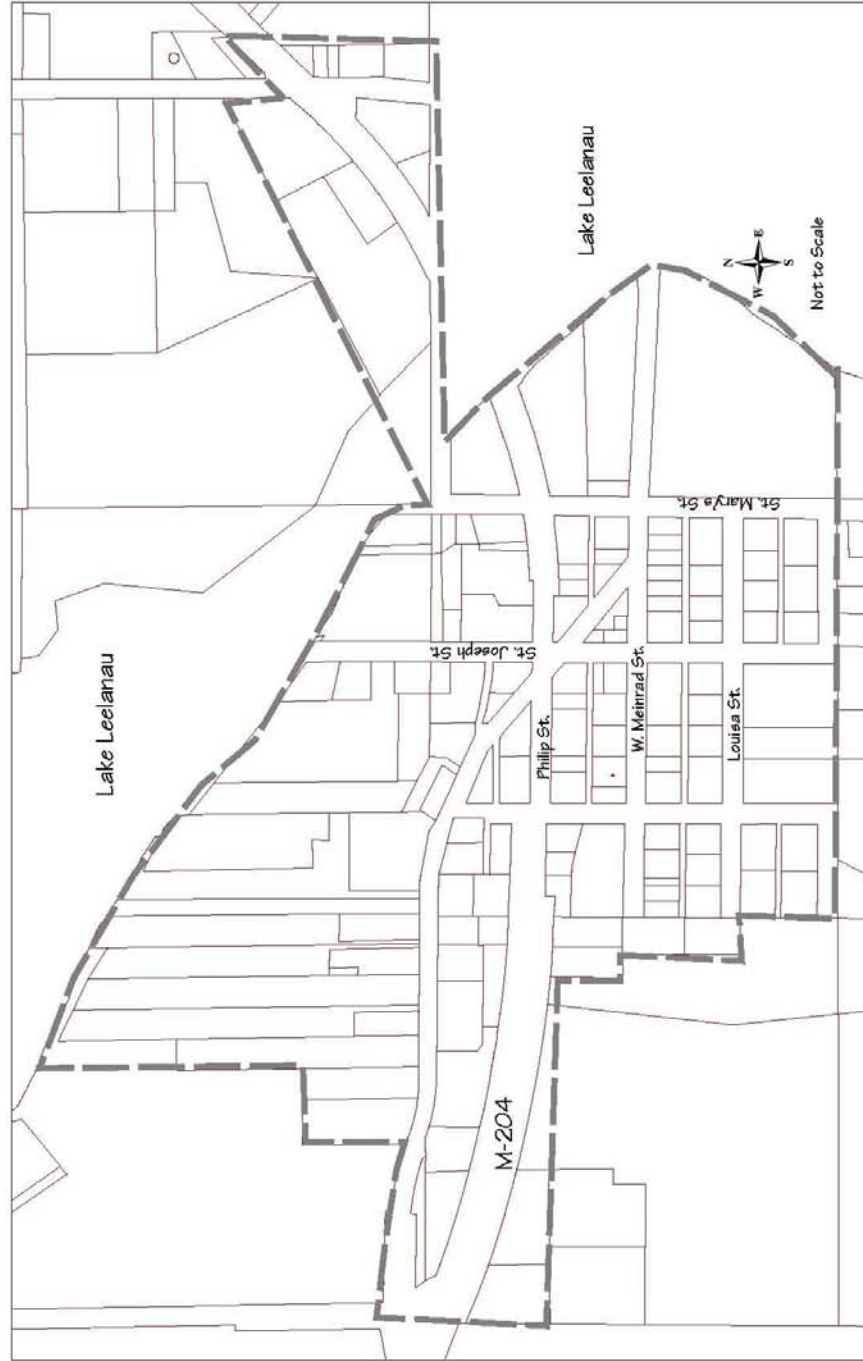
Map Date 11-7-07

Data Sources: Michigan Department of Natural Resources, Leelanau County Planning Department and Leland Township

Leland Township

Sewer District - Lake Leelanau Village

Figure 5-2

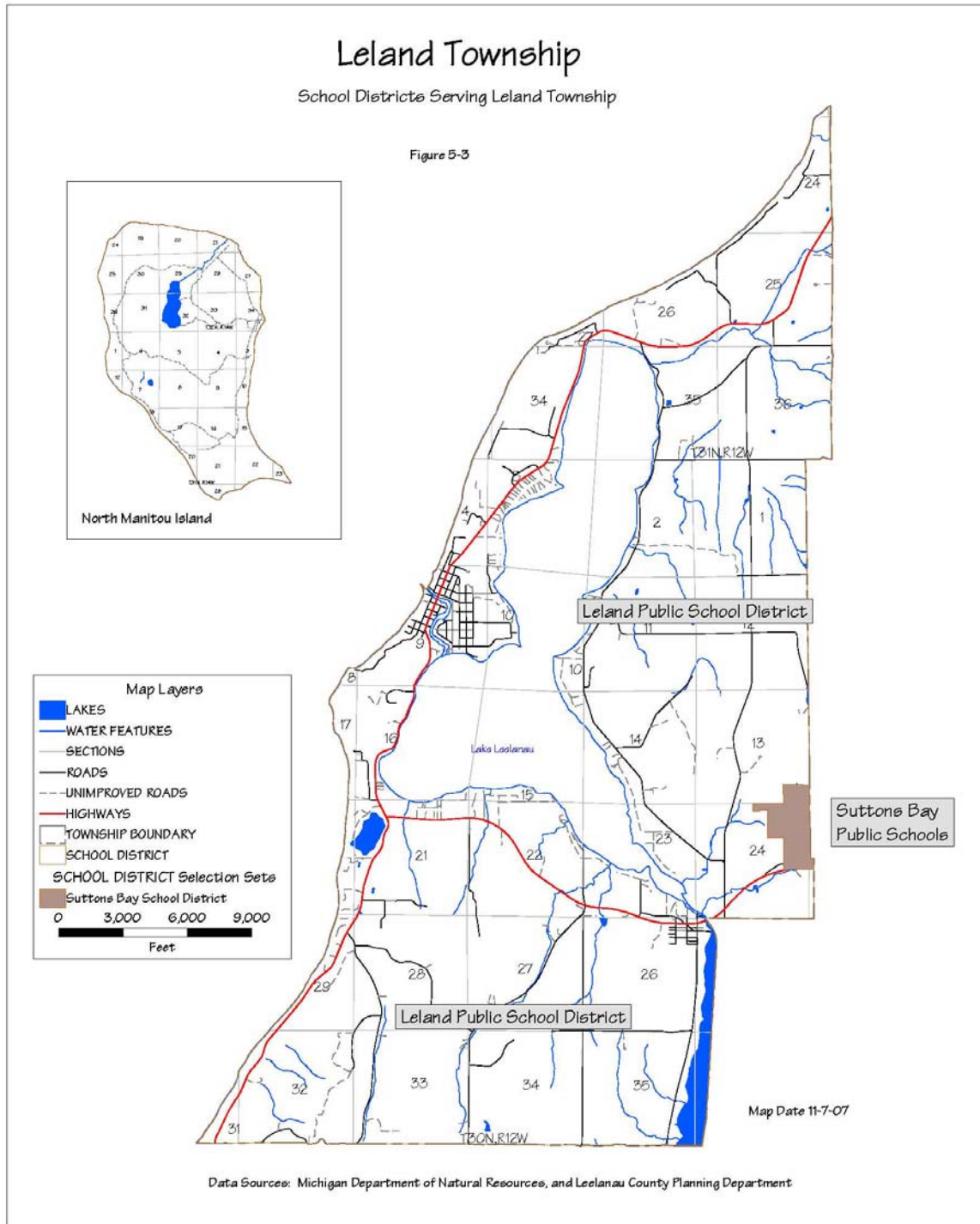


Map Date 11-7-07

Data Sources: Michigan Department of Natural Resources, Leelanau County Planning Department, and Leland Township

5.3 Township Schools

Leland Public Schools in Leland village provide education for grades K-12 with a 2005/2006 enrollment of about 397 students. The Leland Public School District includes portions of adjacent townships and a small portion of Leland Township is served by the Suttons Bay Public School District, see Figure 5-3. St. Mary's School (parochial) in Lake Leelanau village provides education for grades K-12 with a 2005/2006 enrollment of about 240 students.



5.4 Emergency Services

Fire, rescue, and ambulance services are provided by Leland Township Fire and Rescue from Leland village and Lake Leelanau village. The department currently has two full-time paid staff and as well as volunteer personnel under the supervision of the Fire and Rescue Board. These fire departments work closely together with two stations providing service. These volunteer services are augmented by the county 911 system. Mutual aid services agreements are in effect with all fire departments in the county. Advanced life support (ALS) services are provided by North Flight.

Police protection is provided by the Leelanau County Sheriff's Department which also provides inland lake patrols. During the summer months, one deputy is dedicated to the township on a part time basis. Michigan State Police also serve the area.

5.5 Health Services

Health services are provided by local private clinics and an urgent care clinic in Lake Leelanau village, along with health care providers in Suttons Bay and a regional hospital in Traverse City.

5.6 Other Services

Solid waste disposal service is provided by local contractors, currently Waste Management, Kalchick, Maple Disposal and American Waste provide residential service. A recycling drop off site is available for residents, behind the Township offices in Lake Leelanau. Television cable and internet service is provided by Charter Cable Systems of Michigan. PB Casting has an antenna located in the township which also provides high-speed internet service.

5.7 Leland Harbor

Leland Harbor accommodates approximately 70 small vessels (more if "rafting up" is done). This is a harbor of refuge, allowing for short stays, and is a busy destination. The harbor provides fuel and sewage services, while local retail stores and a private marina offer a nearby source of supplies for boaters. Services include a boat launch ramp, a picnic area and playground, toilet and shower facilities, and boat trailer parking.

A fleet of charter fishing boats and commercial fishing boats operate from the privately owned Fishtown complex on the Leland River adjacent to the harbor. The harbor also accommodates commercial excursion boats and the National Lakeshore ferry concession to the Manitou Islands.

Maintenance of the channel entrance for the Leland Harbor is the responsibility of the U.S. Army Corps of Engineers. The daily operation of the Harbor is supervised by the Harbor Commission of Leland Township. The Harbor Commission is appointed by the Township Board. An upgrade and expansion has been planned for 2008.

5.8 Library

The Leland Township Library was founded and funded through the private initiative of Township residents. Land for the library was donated to the Township by Wilber C. Munnecke in 1974. Once established, the library received support for part of its operations from Leland Township

through a millage (currently levied at 0.3 mills). The Library Board is appointed by the Township Board. The Library Board expanded the building in 1992, financing it with private funds.

The library contains 40,000 volumes. It also has a large collection of videos and compact discs. Digital and interlibrary services are also available and are well utilized by Township residents and registered patrons from surrounding jurisdictions.

5.9 Museum and Public Meeting Room

The Leelanau Historical Society operates a museum adjacent to the Leland Township Library which serves the entire county. The Munnecke Room, serves as a publicly available meeting room which separates the library from the museum and is frequently used for Township meetings. The museum board operates independently of the Township.

5.10 Transportation Network

Leland Township is served by the Bay Area Transit Authority which provides daily bus service to Traverse City and throughout the county. However, the primary means of transportation is the automobile. A map depicting the roads within Leland Township is provided in Figure 5-4. The existing road network is described in the following paragraphs.

5.11 State Roads

State highway M-22 (a designated scenic route) encircles the Leelanau Peninsula commencing north from Traverse City to Northport and continuing southwest, passes through Leland village near the west shore of Leelanau Peninsula. Highway M-22 includes ten miles from north to south within Leland Township. The portion of M-22 that runs through Leland Township is part of the M-22 Scenic Heritage Route.

Two miles south of Leland village, highway M-22 intersects with highway M-204. Highway M-204 progresses east for four miles to Lake Leelanau village and continues four miles east to Suttons Bay.

5.12 County Roads

Twelve miles of primary county roads include route 645 and route 643 leading south from highway M-204, and route 641 which connects the narrows with highway M-22 along the east side of Lake Leelanau. Eagle Highway connects the Leelanau Narrows with highway M-22 north through the farmlands of east Leland Township. Twenty-two miles of secondary roads are also maintained by the county.

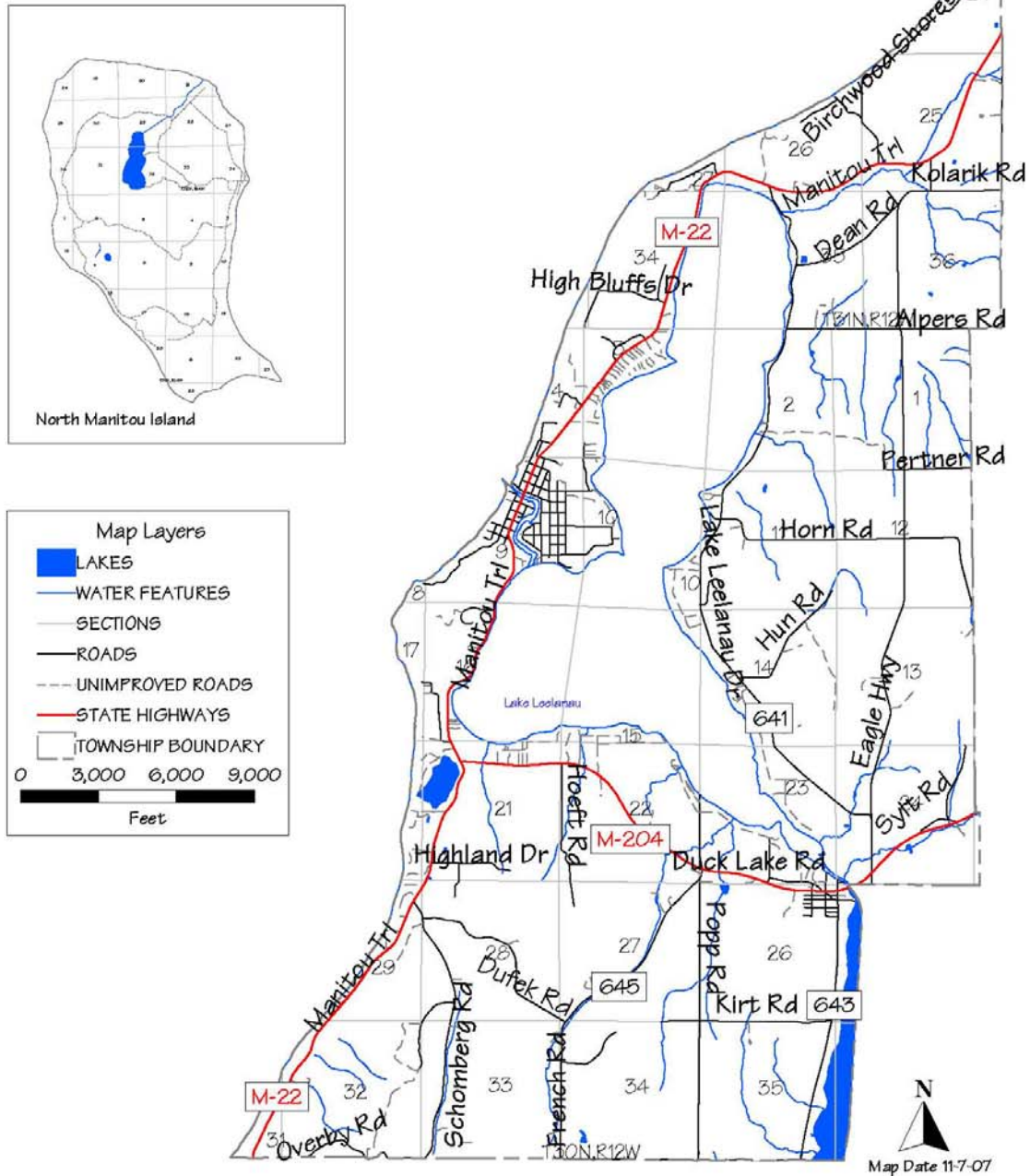
5.13 Other Transportation Routes

Paved shoulders for non-motorized (bicycle) are located along M-204 from Lake Leelanau to Duck Lake Corner, M-22 from Duck Lake Corner to Northport and along Lake Leelanau Drive from M-204 to Bingham Rd. Sidewalk use for pedestrians is provided in the villages.

Leland Township

Road Network

Figure 5-4



Data Sources: Michigan Department of Natural Resources, and Leelanau County Planning Department